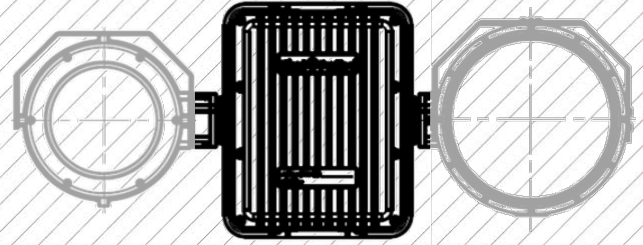


# JAEGAR PTU



## JAEGAR HIGH POWERED PTU (PAN & TILT UNIT)

Part Number	JPT-MK2-I36080W
Pan Range; Velocity	360° Continuous; 0.002° - 100.0° per second
Tilt Range; Velocity	-90° to +90°; 0.002° - 100.0° per second
Accuracy	0.0002° / 0.0035 mRad
Repeatability	0.0002° / 0.0035 mRad
Actuation	Custom stepper motors
Speed Control	Zoom dependant speed control (subject to payload)

### TELEMETRY

Presets	127x Preset positions, 16x preset tours
Protocols	Pelco D, Pelco D Extended, ONVIF Profile-S
Interface	RS485, ONVIF Profile-S, Serial <> IP
Positioning	Absolute positioning feedback

### PHYSICAL CHARACTERISTICS

Input Voltage	Nominal 48VDC (36-72VDC)
Power Consumption	Typical: 53W, peak: 170W (excluding payloads)
Housing Material	Anodised aluminium, white powder marine grade paint finish (other colours are available upon request)
PTU Weight (Typical)	28kg / 61.8lb (excluding mounts, through shaft and payloads, payload capacity 50kg)
PTU Size (Typical)	H434 x W343x D343mm (excluding mounts, through shaft and payloads)
Optional Aux Payload Connectors	QTY4x External connectors allowing for a selection of the following: Power outputs -12vDC, 6A / 24vDC, 15A / 48vDC, 10A Network output – Cat5e, 10/100 Base T Antenna connections – cellular, GPS, Wi-Fi, IP Radio, GPS Compass

### INTERFACES

Ethernet	Command and control of all functions including streaming of H.264 video
RS485	Command and control of all functions and firmware upgrade

### ENVIRONMENTAL

IP Rating	IP67
Temperature Range	-30°C (-22°F) up to 65°C (149°F) (-40°C with optional heater)

## JAEGAR STANDARD PTU (PAN & TILT UNIT)

Part Number	JPT-MK2-I36045W
Pan Range; Velocity	360° Continuous; 0.02° - 45.0° per second
Tilt Range; Velocity	-90° to +90°; 0.02° - 45.0° per second
Accuracy	0.002° / 0.035 mRad
Repeatability	0.002° / 0.035 mRad
Actuation	Custom stepper motors
Speed Control	Zoom dependant speed control (subject to payload)

### TELEMETRY

Presets	127x Preset positions, 16x preset tours
Protocols	Pelco D, Pelco D Extended, ONVIF Profile-S
Interface	RS485, ONVIF Profile-S, Serial <> IP
Positioning	Absolute positioning feedback

### PHYSICAL CHARACTERISTICS

Input Voltage	Nominal 48VDC (36-72VDC)
Power Consumption	Typical: 53W, peak: 170W (excluding payloads)
Housing Material	Anodised aluminium, white powder marine grade paint finish (other colours are available upon request)
PTU Weight (Typical)	20kg / 44.1lb (excluding mounts, through shaft and payloads, payload capacity 30kg)
PTU Size (Typical)	H434 x W343 x D245mm (excluding mounts, through shaft and payloads)

### INTERFACES

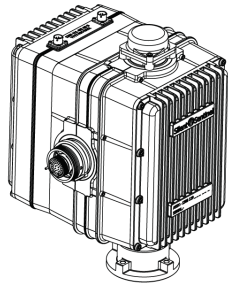
Ethernet	Command and control of all functions including streaming of H.264 video
RS485	Command and control of all functions and firmware upgrade

### ENVIRONMENTAL

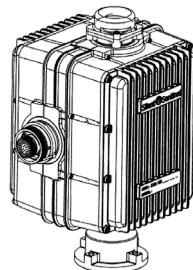
IP Rating	IP67
Temperature Range	-30°C (-22°F) up to 65°C (149°F) (-40°C with optional heater)

## TYPICAL JAEGAR PTU\*

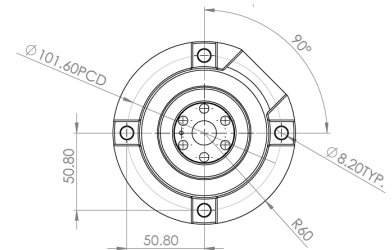
Jaegar Mk2 High Powered PTU Platform



Jaegar Mk2 Standard PTU Platform



Jaegar PT Platform Mounting Pedestal



\* Illustrations are indicative and subject to the final configuration/model.

### PART NUMBERS

JPT-MK2-I36080W	Jaegar Mk2 PTU, IP, white colour
JPT-MK2-I36045W	Jaegar Mk2 PTU, IP, standard power version, white colour

