

\* Illustration indicative & subject to model, side brackets/cameras are part of the payload

# JAEGAR PTU

Powered by  
**NexOS**

## JAEGAR PAN & TILT UNIT (PTU)

Part Number	JPTX-MK2-I360200W
Pan Range; Velocity	360° Continuous; 0.001° - 200° per second*
Tilt Range; Velocity	-90° to +90°; 0.001° - 200° per second*
Accuracy	0.0001° / 0.0017 mRad
Repeatability	0.0001° / 0.0017 mRad
Actuation	Custom stepper motors
Speed Control	Zoom dependant speed control (subject to payload)

## TELEMETRY

Presets Types	Procedural, Positional
Number of Presets	255
Protocols	Pelco D, ONVIF Profile-S (custom available on request)
Interface	RS485, ONVIF Profile-S, Serial <> IP
Positioning	Absolute positioning feedback

## PHYSICAL CHARACTERISTICS

Input Voltage	48VDC
Housing Material and Finish	Anodised Aluminium, white powder marine grade paint finish (other colours are available upon request)
PTU Weight (Typical)	26.4kg / 58.2lb (excluding mounts, brackets, through shaft and payloads)
PTU Size (Typical)	H434 x W275 x D336mm (excluding mounts, brackets, through shaft and payloads)
Optional Aux Payload Connectors	Qty 2x External connectors allowing for a selection of the following: Power outputs -12vDC, 6A / 24vDC, 15A / 48vDC, 10A Network output – Cat5e, 10/100 Base T

## INTERFACES

Ethernet	Command and control of all functions including streaming of H.264, H.265 and MJPEG video
RS485	Pelco D command and control with custom procedural extensions

## NexOS \*\*

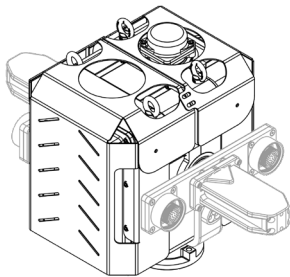
NexOS Core (Standard)	NexOS Core includes: Push autofocus, continuous autofocus, continuous autofocus with automatic ROI, digital zoom, image contrast enhancements, CLAHE, de-fog, electronic image stabilisation (2D), static overlays, remote upgrades, remote diagnostics
NexOS Performance Pack (Cost Option)	In addition to NexOS Core, includes: Electronic Image stabilisation (3D), target tracking, target classification, event detection, dynamic overlays, dynamic boresight, dynamic absolute positioning, edge recording
NexOS Gyro Pack (Cost Option)	In addition to the NexOS Performance Pack, includes: Jaegar NexOS Gyro Pack
NexOS GPS Positioning Pack (Cost Option)	In addition to the NexOS Performance Pack, includes: Jaegar NexOS GPS Positioning Pack

## ENVIRONMENTAL

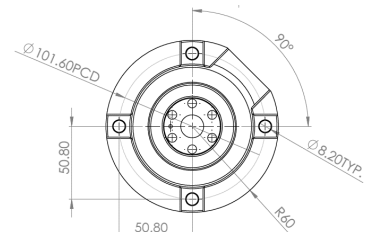
IP Rating	IP67
Temperature Range	-32°C (-25°F) up to 65°C (149°F) (-40°C/°F with optional Cold Weather Pack)

## TYPICAL JAEGAR PAN AND TILT UNIT (PTU)

Jaegar MK2 PTU Platform



Jaegar PT Platform Mounting Pedestal



Illustrations are indicative and subject to the final configuration/model. Dual side brackets are part of the payload.

## PART NUMBER

JPTX-MK2-I360200W Jaegar Mk2 PTU, IP, NexOS, white colour

\* Maximum pan and tilts speeds may be restricted depending on the payload types.

\*\* Subject to payload types.

[WWW.SILENTSENTINEL.COM](http://WWW.SILENTSENTINEL.COM)

+44 (0) 1920 871 734



UK Manufacturer

Specifications may be subject to change without notice.  
E&OE 25/10/2023 V4.2

